

# ARIZONA

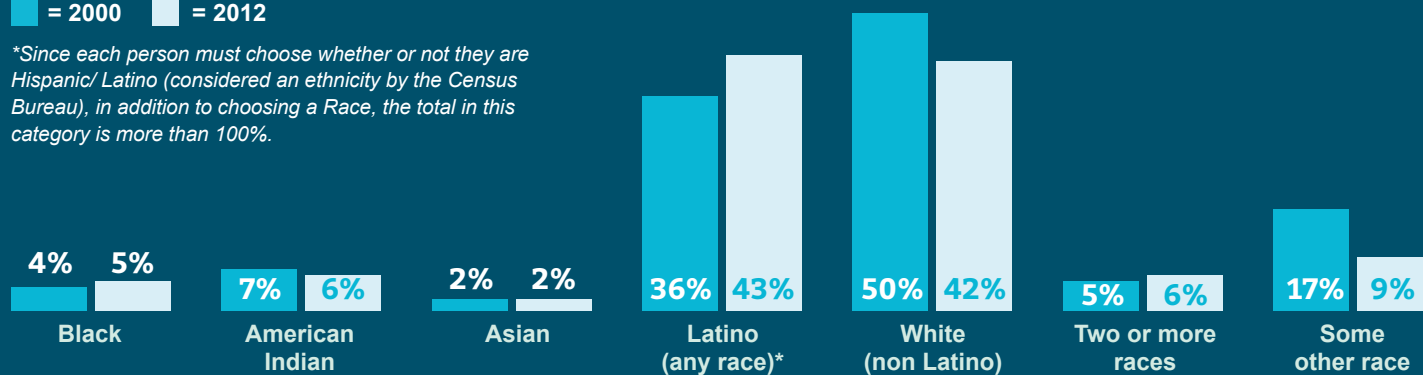
## Demographics



### Percent of population under 18, by race

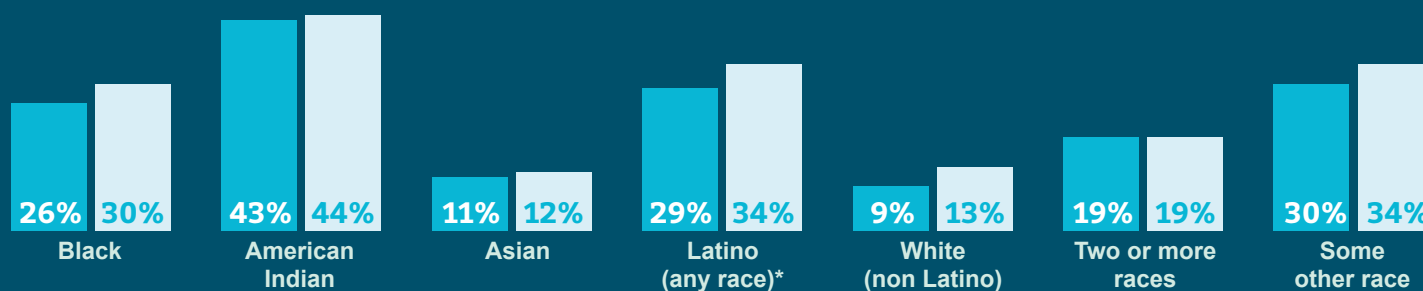
■ = 2000 ■ = 2012

\*Since each person must choose whether or not they are Hispanic/ Latino (considered an ethnicity by the Census Bureau), in addition to choosing a Race, the total in this category is more than 100%.



### Percent of population under 18 living in poverty, by race

■ = 1999 ■ = 2012



# 1,620,894

Number of children under 18 in Arizona in 2012

# ARIZONA

## Family Characteristics

<b>N/A*</b> 2000	<b>29%</b> 2012	<b>71%</b> 2000	<b>63%</b> 2012	<b>60%</b> 2000	<b>65%</b> 2012	<b>11%</b> 2000	<b>6%</b> 2012	<b>N/A*</b> 2000	<b>4%</b> 2012
Children under 6 with at least one foreign-born parent		Children living in married-couple families		Children in families where all parents are in the labor force		Children 5-17 years old speaking English less than very well		Children being raised by their grandparents	

\* Data was not collected in 2000.

**49%** of children in Arizona live in low-income families

## Safety Net Access

Data does not include children receiving assistance through Tribal authorities.

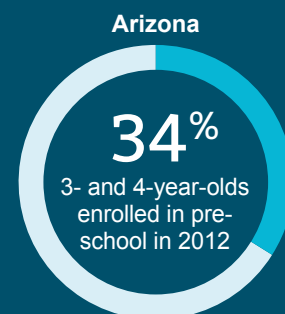
	2000		2013	
Children participating in SNAP (Food Stamps) <sup>1</sup>	12%	160,467	33%	527,360
Children participating in TANF Cash Assistance <sup>1</sup>	5%	70,302	2%	24,666
Children 0-4 years old participating in WIC	26%	98,945	50%	217,830
Children 0-12 years old participating in child care subsidy	7%	84,306	4%	45,182
Children covered by AHCCCS/ KidsCare <sup>2</sup>	34%	542,994	41%	666,304

<sup>1</sup> As of December 31st

<sup>2</sup> As of July 2007 and 2013, respectively

## Education benchmarks

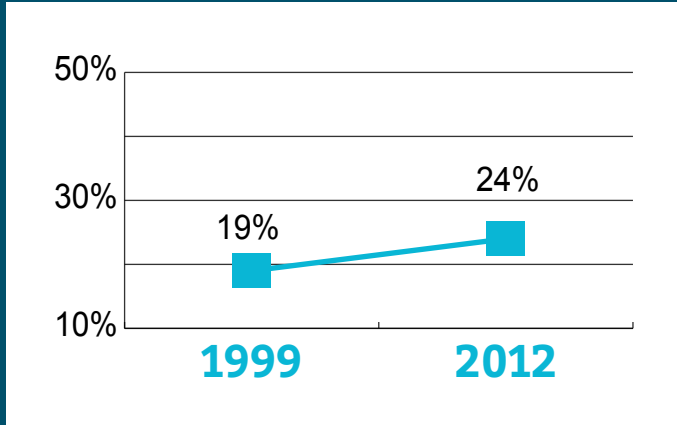
	2000		2012	
3- and 4-year-olds enrolled in preschool	40%		34%	
3rd graders passing AIMS reading test	68%	57,012	75%	62,979
4-year graduation rate	71%	40,885	77%	59,208
White	79%	26,223	84%	28,985
Hispanic/Latino	59%	9,853	70%	21,449
American Indian	56%	2,218	65%	2,849
Black	68%	1,605	71%	3,235
Asian	84%	1,008	87%	1,959
16-19 year olds not enrolled in school and not working	12%		11%	



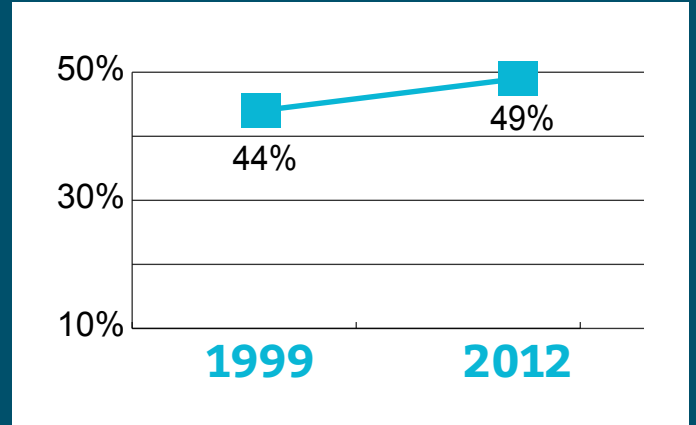
# ARIZONA

## Risk Factors

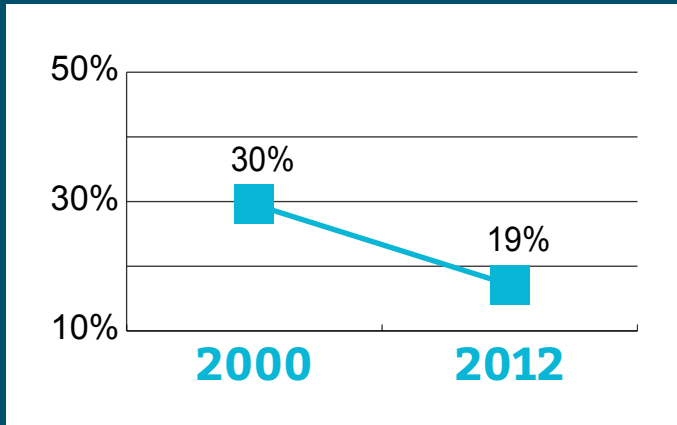
Percentage of children living in poverty



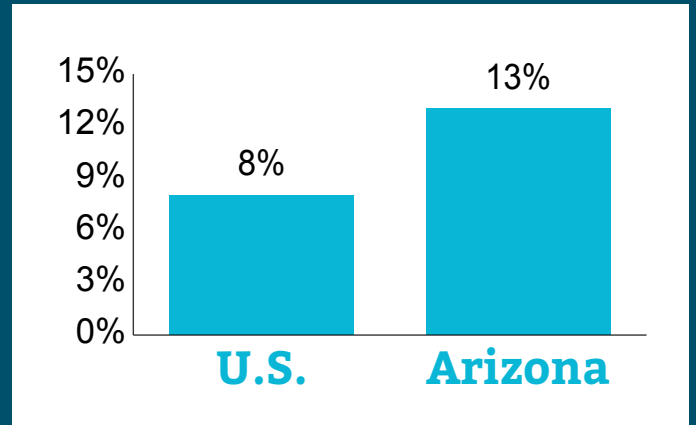
Percentage of children below 200% of the federal poverty level



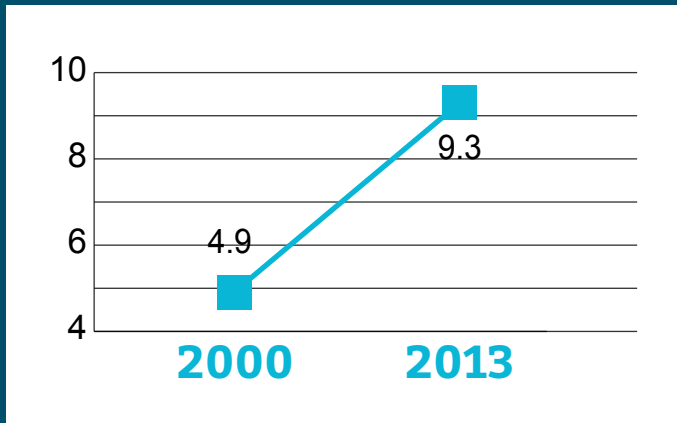
Percentage of births to mothers without a high school education



Percentage of children without health insurance (2012)



Children in foster care  
(Rate per 1,000 under 18 years old.)



Juveniles arrested for a violent crime  
(Rate per 1,000 8-17 year olds)

